



מיפוי שטח אחסון NetApp

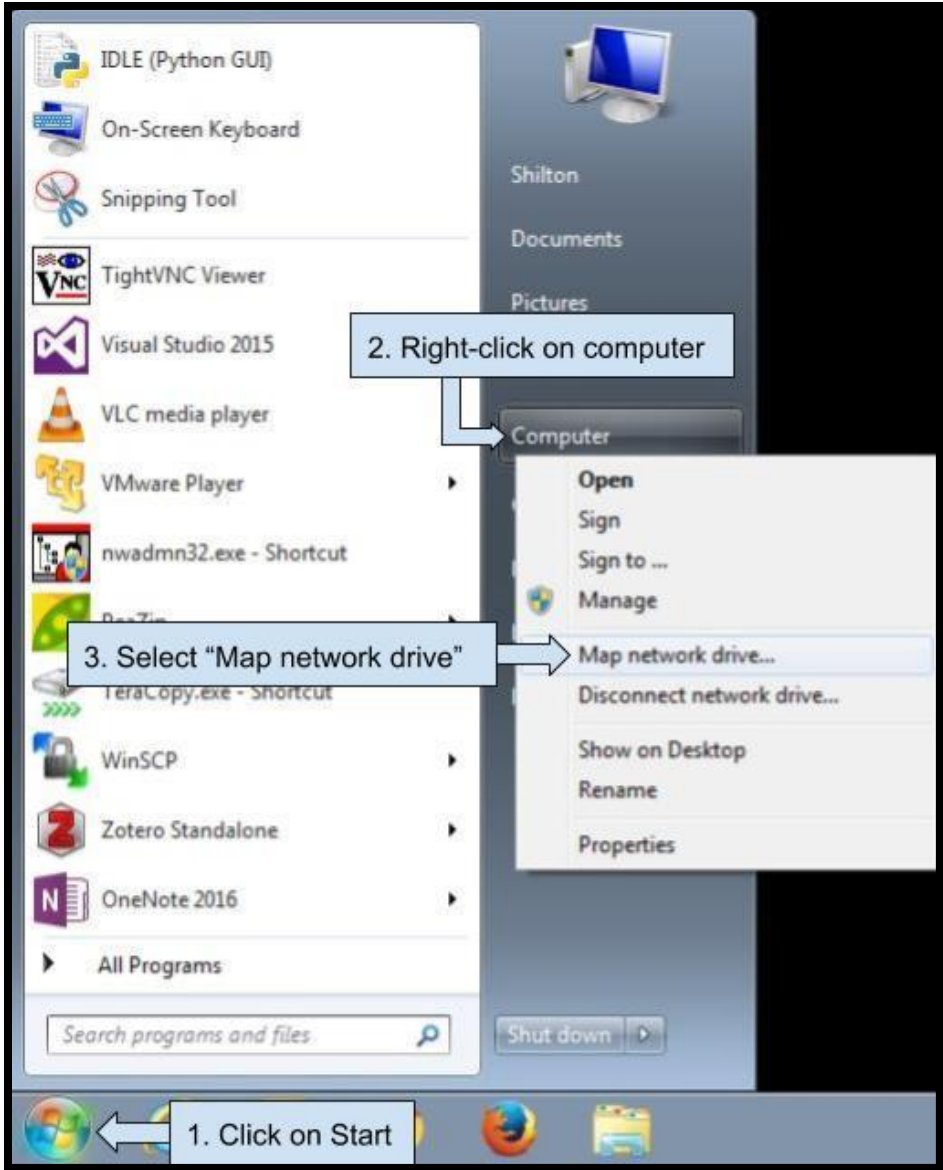
עליכם לוודא מה נתיב האחסון שלכם. הנתיב המלא מופיע במייל שקיבלתם עם תחילת השירות (כאשר Name הוא שם האחסון):

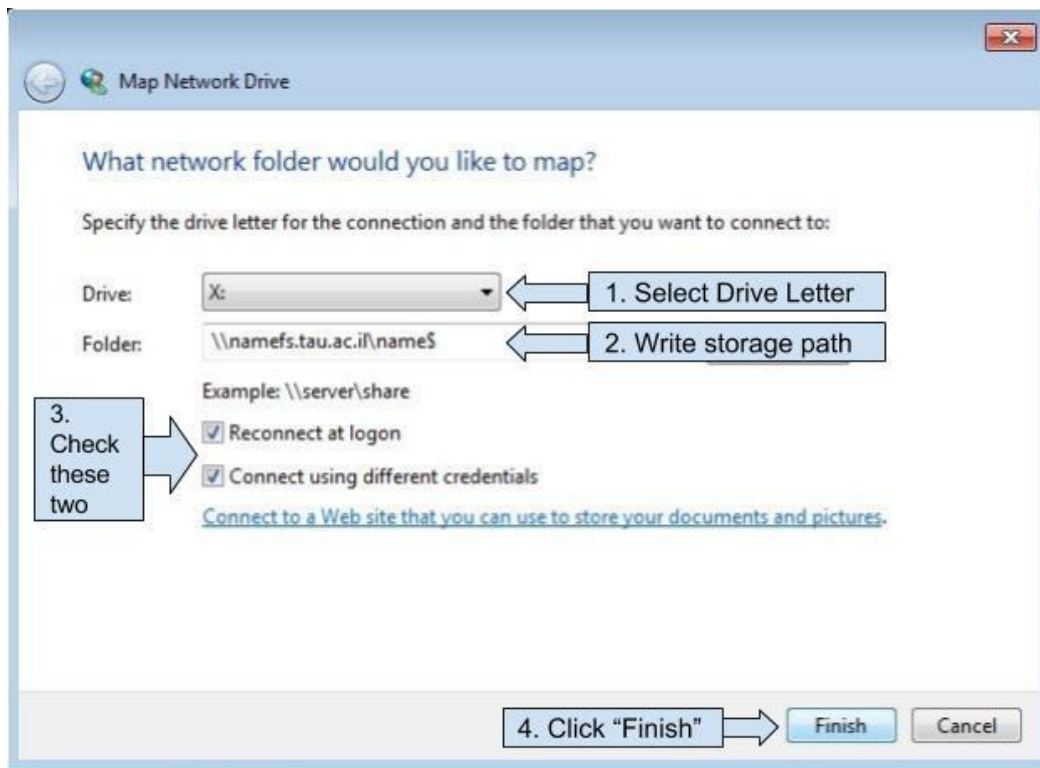
The *Name* storage is available at:

[\\namefs.tau.ac.il\NAME\\$](\\namefs.tau.ac.il\NAME$)

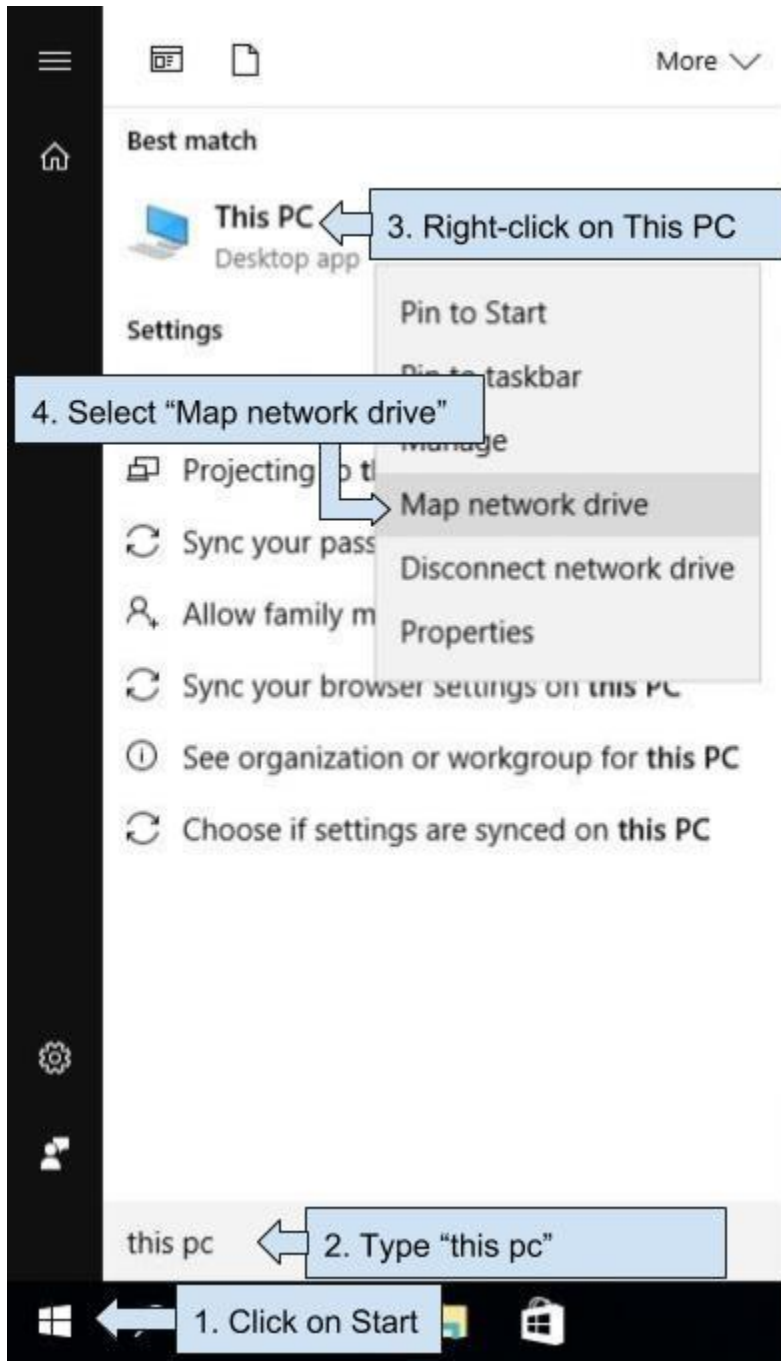
כעת יש למפות את האחסון. המיפוי נעשה בצורה הבאה:

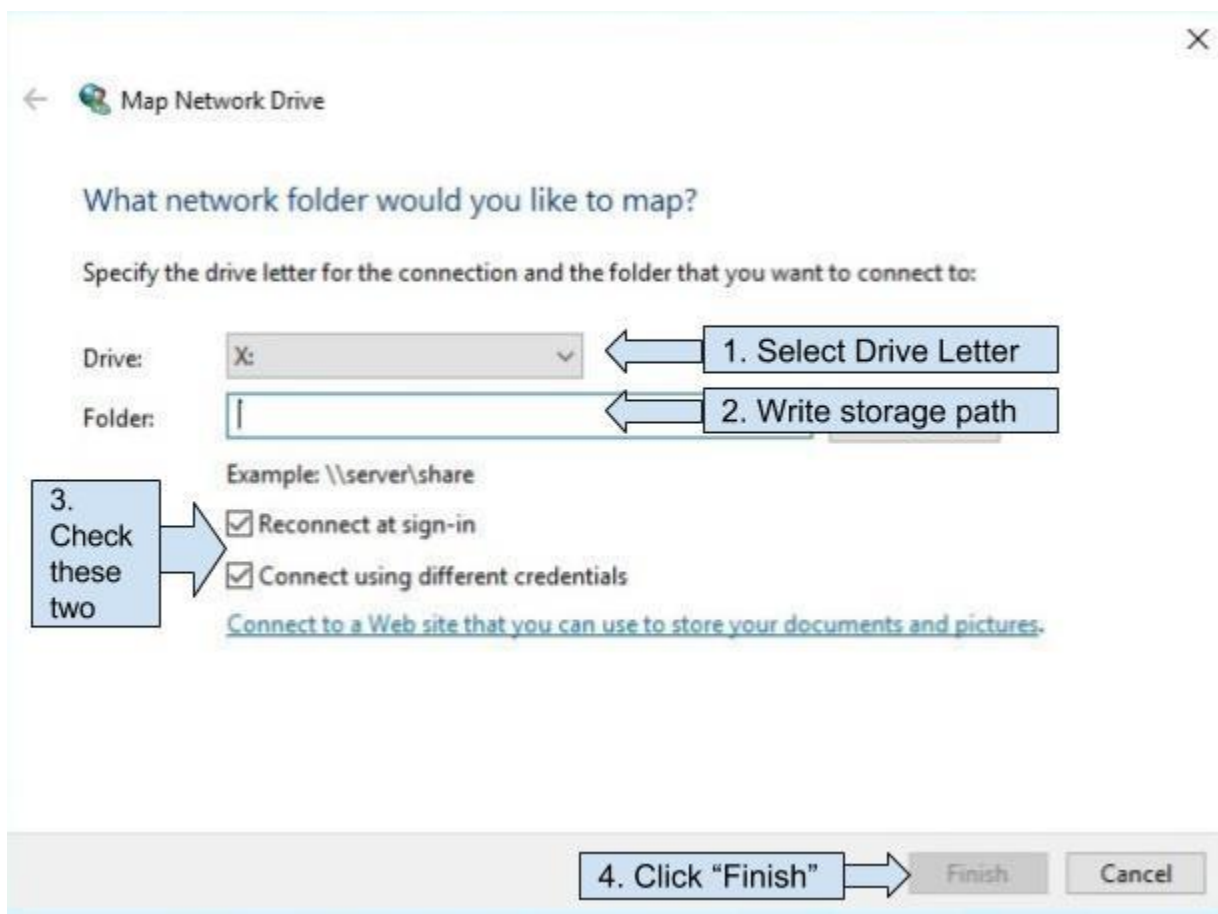
Windows 7





Window 10:





← Map Network Drive



What network folder would you like to map?

Specify the drive letter for the connection and the folder that you want to connect to:

Drive: X: ▾

1. Select Drive Letter

Folder: |

2. Write storage path

Example: \\server\share

3. Check these two

- Reconnect at sign-in
- Connect using different credentials

[Connect to a Web site that you can use to store your documents and pictures.](#)

4. Click "Finish"

Finish

Cancel

Enter network credentials

Enter your credentials to connect to: lifescifs



tau\

1. Write **"tau"** and then your username

Password

2. Write your password

Domain: tau

Remember my credentials

3. Check this

4. Click "OK"

OK

Cancel